



Specifications

[Program Description, Features, System Requirements](#)

A Look at the Compact Disc Players

[The Main Player](#)

[The Face Plate Player](#)

[The Button Bar Player](#)

Program Operation

[Using CD Tray...](#)

[Using the Disc Library...](#)

[Switching Among the Three Players](#)

Other Information

[CD-ROM Setup for CD Audio in Windows](#)

[Miscellaneous...](#)

[Registration Information](#)

[CD Tray Order Form](#)

CD Tray Description

CD Tray is an audio compact disc player with a fully-integrated audio compact disc database.

CD Player with Disc Recognition Database

CD Tray turns your CD-ROM drive into a powerful compact disc music player while also storing all the information about your compact disc library into a categorized and sorted database. Simply enter and save the disc's Artist, Title and Song Titles the first time the disc is played. The next time the disc is inserted into the CD-ROM player, CD Tray will recognize the disc and display the information automatically. Theoretically, CD Tray's database can hold millions of discs. However, due to other program limitations, the reasonable limit is several thousand discs. Quite a compact disc collection just the same!

Three Players in One

CD Tray can be switched among three different player configurations. All three players are fully integrated and may be switched from one to another with a mouse click or two. All current playing functions and counters are preserved when switching among the three players. Having access to three players adds more functionality and convenience in controlling an audio disc while working in Windows.

Features of CD Tray...

System Requirements

Features of CD Tray

CD Tray is designed and looks much like a real compact disc player, making it easy to use. CD Tray provides all the features of an audiophile compact disc player; but, being computer driven, can also provide more sophisticated features, such as:

- **Three Compact Disc Players in One Multimedia Program**

CD Tray provides maximum flexibility when playing compact discs by providing a choice of three players to use. For control of all functions, use the Main player. To have control of the music while working in other applications and to save valuable Windows screen real estate, "shrink" the player to the Face Plate player or Button Bar player. The Face Plate player resembles a rack-mounted compact disc player, while the Button Bar player is a small window containing only the Play Control buttons. The Button Bar has an on-call Play Status window to keep in touch with the disc's Artist, Title and the current Song as well as the Digital Counters for getting current playing positions. Both shrunk players can also be made to 'stay on top' of other Windows applications and they also show up at the same position on your screen each time.
- **Compact Disc Recognition from CD Tray Disc Library**

Enter the compact disc's Artist, Title and Song Titles the first time the disc is played. CD Tray "remembers" the information, displaying it in the Artist/Title window and Songs window the next time you play that disc.
- **Multi-Track Programming**

The Programming and Review Program tools are designed for precise control of a track program. Using the Programming Tool, creating a track program is as easy as double-clicking the tracks you want to play. The Review Program tool then lists the tracks programmed, shows the current track being played from the program and displays real-time digital counters of the program's duration, elapsed and remaining times. These tools are indispensable for making tapes of your compact discs. A favorite program may also be saved and recalled for each disc in the Disc Library. You can play just the songs you want each time without having to re-program CD Tray.
- **Categorized, Multi-Indexed Audio Compact Disc Database**

In addition to playing compact discs, CD Tray stores information about your compact discs in a database, the Disc Library. CD Tray provides powerful database tools for categorizing, editing, filtering, searching, sorting, reporting, printing, exporting and browsing the Disc Library. The database also stores monetary costs and purchase information for your compact discs for insurance purposes or just to see where all your money goes.
- **Fast Forward / Rewind / Cueing**

An easy-to-use tool is provided to fast forward, rewind or cue to a certain position in a song. Using the digital readout of the track time displayed on the tool, clicking and holding the mouse button on the tool's scroll bar will set the play position. If CD Tray is currently playing, CD Tray will skip to the selected position and resume playing. If stopped, CD Tray is cued to that position and pressing the Play Control starts play at that cued position. Fast Forward / Rewind / Cueing Tool
- **Segment Play**

The Segment Play tool is used to select and play a segment of a track. Select the start and ending positions, click the Go! button and CD Tray plays the segment and stops. Play the segment as many times as desired or choose a different segment. The segments can be any size from one second to the length of the track. Designed primarily to be used as an aid in recording Windows .WAV audio files, the Segment Play

tool can also be mildly entertaining.

- **Shuffle Play,**
- **Disc Repeat, Track Repeat, Restart Track,**
- **Bidirectional Track Time**

Like a real CD player, CD Tray features Shuffle Play for playing tracks in a random order. Shuffling the tracks is accomplished using the Programming Tool which can be used to shuffle the tracks as many times as desired until the final selection is made for the shuffled program.

Provided on CD Tray's menu, are Disc / Track Repeat options as well as an option to Restart the current track.

The digital counter display which indicates Track Time may be set to increment or decrement as the track plays at the click of a button.

- **Configure CD Tray as a Complete Multimedia System**

Make CD Tray the focal point of your computer's multimedia audio system by executing other multimedia programs from CD Tray. CD Tray has the capability to add programs to its menu that you may select from as desired. If your computer includes a sound card, you may add your mixers, recorders, WAV players and so forth for easy access. Actually, any program you wish to have access to while using CD Tray may be added. Examples might be Windows' Calendar or NotePad programs.

For even easier access, CD Tray also includes Volume and Recorder buttons on the SpeedBar for executing your sound card's mixer program and an audio recorder such as Windows' Sound Recorder.

- **SpeedBar**

For speedy access to certain tools and functions, CD Tray includes a SpeedBar. The SpeedBar is collection of buttons that execute certain commonly used functions in CD Tray. All three of the players in CD Tray have their own SpeedBar, although the two shrunk players have only certain buttons.

- **Graphics Windows**

Included with CD Tray is a collection of simple animated graphics windows which may be viewed while listening to music. These windows serve no purpose other than amusement and promoting relaxation.

CD Tray System Requirements

Minimum System Requirements

80286 (or higher) processor

2 MB RAM

Microsoft Windows 3.1

CD-ROM drive

Headphones

VGA video graphics

1 MB free hard disk space (more space is used as discs are added to [Disc Library](#))

Recommended Hardware

Sound Board

External Speakers

See Also:

[CD-ROM Setup for CD Audio in Windows](#)

CD Tray



Audio Compact Disc Player & Compact Disc Library

Version 2.0



Copyright 1993

All Rights Reserved

Portions copyright Blaise Computing Inc.

The Main Player



Click a player component for more information

The Face Plate Player



Click a player component for more information

The Button Bar Player and Play Status window



Click a player component for more information

Switching Among the Three Players

CD Tray can be transformed among three different player configurations. All three players are fully integrated and may be switched from one to another with a mouse click or two. All current playing functions and counters are preserved when switching among the three players.

For lack of better terminology, switching from the Main Player to one of the smaller players, the Face Plate player and the Button Bar player, is called "shrinking".

From the Main Player you may shrink to a smaller player by choosing the player from the Shrink Menu. Also from this menu, you may execute a dialog to select certain Shrink Options.

You also may choose a player from the SpeedBar:



Shrink to the Face Plate player.



Shrink to the Button Bar player.

To switch from one of the shrunk players to the other, click the player's control menu box. From this menu, for example:



the alternative shrunk player will be listed. Select this item on the menu and CD Tray will switch to that player. Also, you will notice that you may toggle the "Always On Top" status of the player from this menu.

To switch back to the Main Player, a button is provided along side the shrunk player's playing controls:



Click this button to switch to CD Tray's Main Player.

Using CD Tray

- [Controls](#)
- [Digital Displays](#)
- [Artist/Title Window](#)
- [Songs Window](#)
- [Menu Commands](#)
- [Track Programming](#)
- [Saving and Recalling a Track Program](#)
- [Fast Forward / Rewind / Cueing Tool](#)
- [Segment Play Tool](#)
- [Speed Bar](#)
- [Elapsed Disc Time Graph](#)
- [Mixer and Recorder Execution](#)
- [Executing Other Programs From CD Tray](#)
- [Keyboard Play Control](#)
- [Shrink Options](#)
- [Graphics Windows](#)

Controls

These controls are used to control the audio playing functions of the CD-ROM. They are duplicated on all three CD Tray players.

Depending on the state of CD Tray, these buttons will sometimes be disabled. When disabled, the buttons are dimmed.



[Click a control for more information...](#)

The two shrunk players have additional controls:



This button will switch from the currently shrunk player back to the Main Player. Both shrunk players have this control button.



This button is only on the Button Bar player. This button executes the Play Status window which displays current disc information as well as all of the digital displays in a small, compact window. If the Play Status window is already open, this button is disabled.

Play the compact disc loaded in your CD-ROM drive.

This control is disabled if the CD-ROM is currently playing or if there is no disc in the CD-ROM drive.

Stop playing the compact disc in your CD-ROM drive.

This control is disabled if the CD-ROM is currently stopped or if there is no disc in the CD-ROM drive.

Pause or Resume playing the compact disc in the CD-ROM drive.

If CD Tray is paused, clicking this control will resume play. This control is disabled if the CD-ROM is currently stopped or if there is no disc in the CD-ROM drive.

Skip LEFT to previous track.

If CD Tray is currently playing, the previous track will start playing. If CD Tray is stopped the previous track will be cued for playing.

If CD Tray is in Program Mode the previous track that is programmed will be played or cued.

Skip RIGHT to next track.

If CD Tray is currently playing, the next track will start playing. If CD Tray is stopped the next track will be cued for playing.

If CD Tray is in Program Mode the next track that is programmed will be played or cued.

Eject the compact disc from the CD-ROM drive.

This control is disabled if the CD-ROM is currently playing or there is no disc in the CD-ROM drive.

Note:

The Eject button on your CD-ROM drive will still eject the disc while playing and CD Tray will try to recover gracefully when this happens. However, it is best to use the Eject button on CD Tray so it knows all about what's going on with your CD-ROM drive and can update itself accordingly.

Switch from the current shrunk player back to the Main player

Displays the CD Tray About dialog. This dialog displays CD Tray's version and copyright information. Also displayed is current Windows system information.


The duration of the current track playing or cued.

The Track Title for the song playing or cued.

The Artist for the current disc in the CD-ROM.

The Title of the current disc in the CD-ROM.

Closes the Play Status window.

The Play Status window can be recalled by clicking  on the Button Bar player.

This button executes the Play Status window.

Cueing

Positioning the read mechanism (lens) of the CD-ROM drive to a certain position on the compact disc. When play starts, it starts at the cued position.

Program Mode

CD Tray playing mode in which you choose the particular tracks you wish to play on the compact disc.

You may choose as many or as few tracks as you wish and in any order or you may shuffle the tracks in a random order.

After CD Tray enters Program Mode, the Review Program tool will appear to display the programmed tracks and current track as well as the duration, remaining and elapsed times for the chosen program.

Control

A Control is one of the large buttons on CD Tray. These buttons control operation of the player for Playing, Stopping, Pausing etc.

These buttons are duplicated in all three CD Tray players and also on the menu of the Main Player.

In addition, playing function may be controlled via the keyboard using Ctrl-key combinations. The keys are:

- Ctrl-P --> Play
- Ctrl-S --> Stop
- Ctrl-U --> Pause
- Ctrl-M --> Resume
- Ctrl-X --> Skip to Next Track
- Ctrl-V --> Skip to Previous Track
- Ctrl-J --> Eject disc from the CD-ROM drive

These keys work with all three CD Tray players.

Time Format

The time format used by CD Tray for digital counters.

The format is a minutes, seconds format:
minutes:seconds (mm:ss)

Database Filter

To Filter a database means a field is chosen from the database record for filtering. Some criteria is given about that field and only records that match that criteria are listed.

For example, filtering CD Tray's Disc Library by the musical category 'Classic Rock' will list only those discs in the database that have been categorized with the category 'Classic Rock'.

Fast Forward

Move the playing position of the CD-ROM lens forward to a new track position without delay.

Rewind

Reverse the playing position of the CD-ROM lens to a previous track position without delay.

Disc Library

The Disc Library is a database of all your audio compact discs.

The files are CDTRAY.DAT & CDTRAY.IXC.

The .DAT file is the data file and the .IXC file is the index file. Both are necessary to run CD Tray and both must be in the directory specified by the entry "DbDirectory=" in the CDTRAY.INI configuration file. (CDTRAY.INI is located in the Windows default directory, ie. "C:\WINDOWS".)

The files are created the first time CD Tray is run. The "DbDirectory=" entry will initially be set to the directory specified in CD Tray's install program so that the database files will be located in the same directory as the CD Tray program files.

See Also:

[Rebuilding the Disc Library Index](#)

CDTRAY.INI

A configuration file for CD Tray.

This file is where certain program options are set so they will be reset again each time CD Tray is run.

Music Category

A user-defined group of discs.

Examples of categories would be Classic Rock, Jazz, Classical, etc. CD Tray allows grouping of discs in this way so as to categorize the Disc Library. This greatly enhances database filtering and sorting.

Sorted Order

The sorted order specifies a field that controls the alphabetic order that compact disc records will be listed in.

For example, sorting by the Artist field might make Alan Parsons Project the first record and ZZ Top the last.

Red Book Audio

The digitized audio format used by commercial audio compact discs. The 16-bit 44.1 KHz data that conforms to this format can be stored only on compact discs.

CD-ROM

Compact Disc - Read Only Memory.

A CD-ROM drive is a high-capacity storage device that can store up to 600 MB of data; it does not permit a user to save information, but only to read stored data. CD-ROM drives conform to the Red Book Audio format which allows them to also play audio compact discs.

Track Program

A list of tracks to be played by CD Tray that have been selected using the Track Programming tool.

A track program can be saved, after programming is completed using the Save Program menu item in the Disc Menu. The track program can be recalled by selecting Load Program menu item also in the Disc Menu.

Software Driver

A program that once executed, installs itself into the computer's memory and remains there ready to perform its function as necessary. These programs are usually initially loaded by including them in the computer's startup configuration files (CONFIG.SYS & AUTOEXEC.BAT) so that they are loaded when the computer is powered on. Other drivers, specific to Windows, are loaded when Windows is first started by including them in the Windows startup configuration files (WIN.INI & SYSTEM.INI). Software drivers that control devices, such as a CD-ROM or a printer are called device drivers.

MSCDEX.EXE

Microsoft CD-ROM EXtensions.

A DOS-level software device driver which allows MS-DOS to communicate with a CD-ROM drive. This driver is loaded in AUTOEXEC.BAT.

Setting Up MSCDEX.EXE

Setting up MSCDEX.EXE

As of Version 2.22 --> (MSCDEX.EXE 25377 03-10-93 6:00a):

Syntax

```
MSCDEX /D:driver [/D:driver2... ] [/E] [/K] [/S] [/V] [/L:letter]
[/M:number]
```

You should include the directory that holds MSCDEX.EXE in your PATH statement in AUTOEXEC.BAT.

Parameters

/D:driver1 [/D:driver2...]

Specifies the driver signature of the first CD-ROM device driver. The driver1 parameter must match the parameter specified by the /D switch on the CONFIG.SYS command that starts the corresponding CD-ROM device driver

The MSCDEX command must include at least one /D switch. To install additional CD-ROM device drivers, specify an additional /D switch for each device driver.

/E

Specifies that the CD-ROM driver be allowed to use expanded memory, if available, to store sector buffers.

/K

Specifies that MS-DOS should recognize CD-ROM volumes encoded in Kanji. By default, MS-DOS does not recognize Kanji CD-ROM volumes.

/S

Enables sharing of CD-ROM drives on MS-NET or Windows for Workgroups servers.

/V

Directs MSCDEX to display memory statistics when it starts.

/L:letter

Specifies the drive letter to assign to the first CD-ROM drive. If you have more than one CD-ROM drive, MS-DOS assigns additional CD-ROM drives subsequent available drive letters.

/M:number

Specifies the number of sector buffers.

Loading and enabling a single CD-ROM device driver and MSCDEX.EXE

This example shows the relevant CONFIG.SYS and AUTOEXEC.BAT commands for a computer with one CD-ROM drive.

The CONFIG.SYS file contains the following DEVICE command:

```
device=c:\devices\cdromdrv.sys /d:miscd000
```

This command loads the device driver CDROMDRV.SYS, which came with the CD-ROM drive. The AUTOEXEC.BAT file contains the following MSCDEX command:

```
c:\dos\mscdex /d:mscd000 /l:g
```

This command enables the device driver that has the driver signature MSCD000. The /E switch specifies that the driver be allowed to use expanded memory, if available. The /L:G switch assigns the drive letter G to the CD-ROM drive.

MCICDA.DRV

The Windows' MCI (Media Control Interface) CD Audio driver.

This driver is loaded from the entry in the [MCI] section of SYSTEM.INI.

The entry should read as: "CDAudio=mcicda.driv".

Setting up MCICDA.DRV

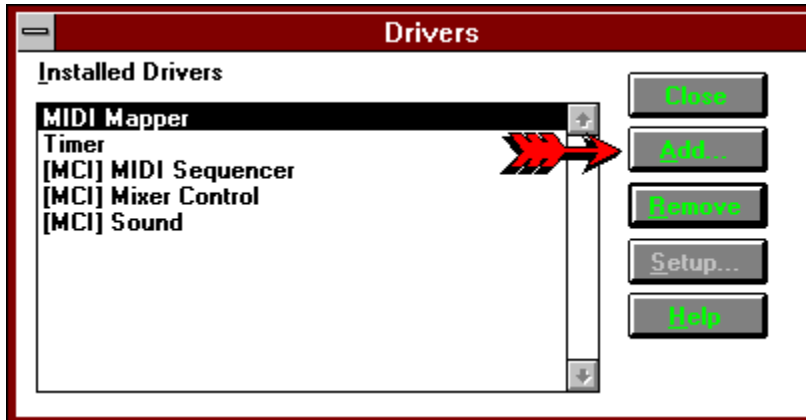
Setting Up MCICDA.DRV in Windows 3.1



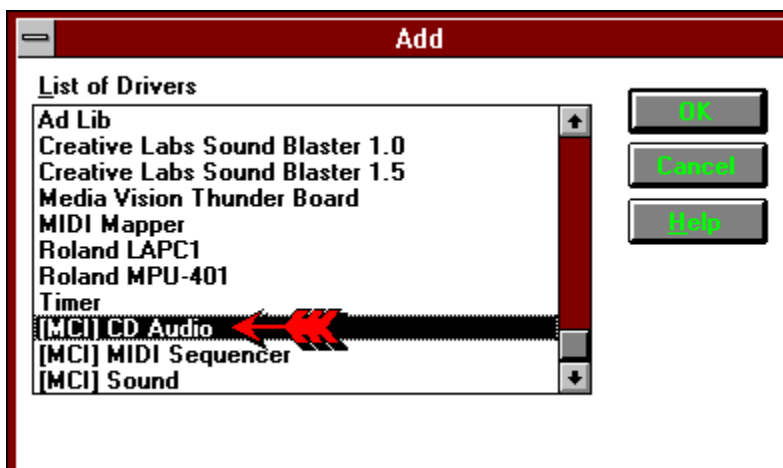
Control Panel Start the Windows Control Panel



Drivers Choose the Drivers Icon.



From this dialog, choose ADD to add a driver to the system.



Select "[MCI] CD Audio", Click OK and confirm adding the driver.

Restart Windows

Always On Top

To make a window "Always On Top" means that the window will remain visible on the Windows' desktop even when deactivated.

Making a window "Always On Top" keeps the window or program readily available since it is always visible - even when working in other Windows applications.

Digital Displays

The digital displays show real-time counters for various playing times for the current compact disc in the CD-ROM drive. The Button Bar player's Play Status window duplicates all digital counter displays and the Face Plate player duplicates some of the displays.





[Click on the digital display for a description...](#)

Current track that CD Tray is playing or is ready to play.

The time remaining for the current track (counting down) or the time elapsed for the current track (counting up).

This display is bidirectional meaning that it can be set to:
increment from 00:00 to the length of the current track or
decrement from the length of the track to 00:00.

Toggling the display is controled by clicking the track time button:

-  Track Time is currently incrementing from 00:00 to the track length.
-  Track Time is currently decrementing from the track length to 00:00.

The track time button is duplicated on the Button Bar player's Play Status window and on the Face Plate player. This button's current setting is preserved between executions of CD Tray in CDTRAY.INI.

The elapsed amount of time that has played from the beginning of the compact disc. This display counts from 00:00 to the length of the disc.

Total number of tracks that are on this compact disc.

Total length of time this compact disc will play.

It is the sum of the lengths of all the tracks plus any extra time at the start, and at the end of the disc. These extra times vary between different discs.



Remaining time left to play on this compact disc.

This display counts down from the length of the disc to 00:00.

This is a status indicator that indicates what CD Tray is currently doing.

This display will indicate Play, Stop and Pause. It will be blank when no disc is inserted in the CD-ROM drive.

Toggles the bidirectional Track Time digital display.

-  Track Time is currently incrementing from 00:00 to the track length.
-  Track Time is currently decrementing from the track length to 00:00.

Click the button to toggle the direction.

Artist / Title Window

Artist	Title
Fleetwood Mac	Rumours

The Artist / Title Window contains only two edit fields. They are used to input the Artist's name and the Title of the compact disc. This information is saved in the disc's record in the Disc Library.

Entering Information

This information must be manually entered. **This information is not contained on an audio compact disc; it must be entered by the user.** When entering the Artist and Title information, press **Tab** to move the input focus between the two edit controls. Press **Shift-Tab** to move backwards. Press **Return** when you are done inputting the Artist and Title information.

Saving Information

After inputting or editing information in this window, choose Save Disc Info from the Disc Menu to save your edits to the CD Library. CD Tray will prompt you if you forget.

You may also press the hot-key, **Ctrl-D**, to save the disc information to the Disc Library. After typing in the information, you must save the information into the Disc Library before that information will be displayed in CD Tray's various players and windows.

Songs Window



1	Hi Roller	03:36
2	Time Loves A Hero	03:48
3	Rocket In My Pocket	03:24
4	Day At The Dog Races	06:30
5	Old Folks Boogie	03:32
6	Red Streamliner	04:47
7	New Delhi Freight Train	03:44

The Songs Window displays the song titles for the current disc in the CD-ROM player. The edit control containing the song currently playing, programmed or ready to play will be highlighted in red.

Song Titles

The titles are initially blank and you must input them from the song listing on the compact disc. **Song title information is not contained on an audio compact disc, it must be input manually.**

Track Lengths

Listed beside each song edit line, are the lengths of that corresponding track on the compact disc. You may note sometimes these track lengths may not match exactly any track lengths that are written on the compact disc. However, these are the track lengths that are stored on the compact disc by the publisher of the disc.

Track Play Buttons

To the left of each song, are numbered Play buttons which you may click to play a song instantly. If CD Tray is currently playing, it will skip to that track. If CD Tray is stopped, that track will start playing. These buttons are disabled when CD Tray is in program mode.

Moving Around

A scroll bar is provided to scroll the window up or down to tracks not currently shown. The scroll bar will not be shown if the number of tracks on the disc is less than eight. You may use the **Up/Down Arrows** and **PgUp/PgDown** to scroll through this window.

Entering Information

When entering track titles, pressing the **Tab** key will move the input focus to the next track's input entry control. Press **Shift-Tab** to move backwards. Press **Return** when you are done inputting track titles. This will erase the flashing caret within the song title edit controls.

Saving Information

After inputting the disc's information in this window, choose Save Disc Info from the Disc Menu to save the information in the Disc Library. CD Tray will prompt you if you forget before exiting.

You may also press the hot-key, **Ctrl-D**, to save the disc information to the Disc Library. After typing in the information, you must save the information into the Disc Library before that information will be displayed in CD Tray's various players and windows.

Menu Commands

Disc Control Tools Library Shrink Window Options Help

Click the menu item for more information.

Disc Menu

Disc
S ave Disc Info Ctrl-D
L oad Program
S ave Program
E xit

Click the menu item for a description of that item.

Save any changes made to the compact disc record.

You may also press the hot-key, **Ctrl-D**, to save the disc information to the Disc Library. After typing in the information, you must save the information into the Disc Library before that information will be displayed in CD Tray's various players and windows.

Load a saved program for this compact disc.

This item is disabled unless the current compact disc has a program that you have saved previously.

Upon loading a program, CD Tray will enter into program mode. Click the Play Control button to start the program playing.

Save the current track program.

This item is disabled unless CD Tray is in program mode.

Exit the program.

If any of the current disc's information has been edited and not saved, you will be prompted whether or not you wish to save it.

Control Menu

This submenu duplicates the playing control buttons on CD Tray's players. CD Tray provides keyboard control by using the hot-keys listed to the right of each menu item.

Control	
Play	Ctrl-P
Stop	Ctrl-S
Pause	Ctrl-U
Resume	Ctrl-M
Skip Prey	Ctrl-V
Skip Next	Ctrl-X
Eject	Ctrl-J

Click the menu item for a description of that item.

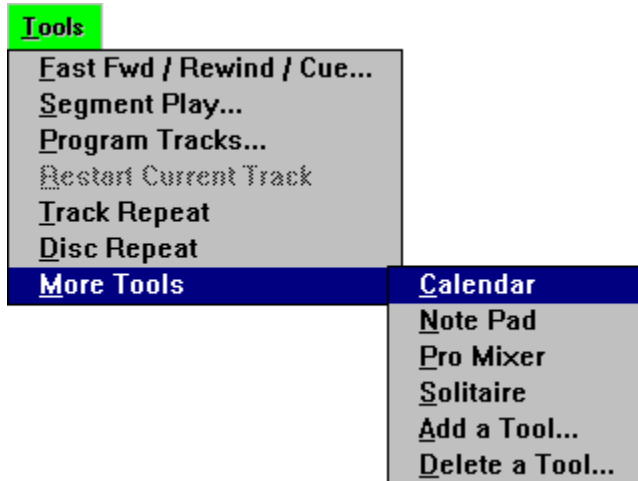
Pause playing the compact disc in the CD-ROM drive.

This control is disabled if the CD-ROM is currently stopped or there is no disc in the CD-ROM drive.

Resume playing the compact disc in the CD-ROM drive.

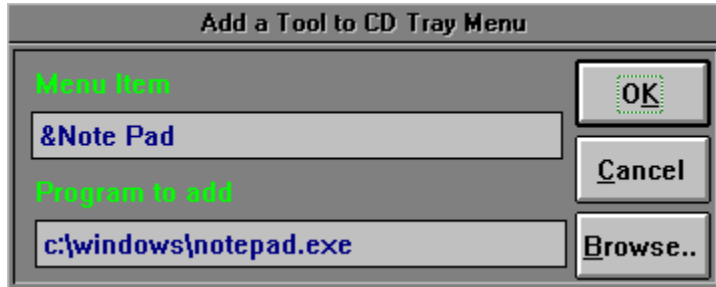
This control is disabled if the CD-ROM is currently stopped or there is no disc in the CD-ROM drive.

Tools Menu



Click the menu item for a description of that item.

Add a Tool to CD Tray's Menu



CD Tray allows adding Mixer and Recorder programs to CD Tray's Speedbar for quick execution from CD Tray. In addition, more programs may be added to CD Tray's Tools Menu for execution from CD Tray.

Adding a Tool allows you to specify the other tools or programs you wish to execute from CD Tray. You will specify the **name you wish to put on CD Tray's menu** and the **executable program name**.

Adding a Tool

The Add Tool dialog will initially be displayed. You can type in the information yourself or click the **Browse** button. This will present a file dialog that can be used to browse through the directories of your hard disk to find the executable (.EXE) file. Browsing for the program is easier than trying to remember the complete path to the program which you might get wrong. Likely candidates for some tools to add to CD Tray's Tools Menu are the Windows NotePad and Calendar applications. Any executable program may run from CD Tray in this manner.

Restrictions

You may add up to 5 programs to the user-defined menu.

Menu Names

Put an ampersand (&) in front of the letter of the menu item name to make it the hot key for the item. Be careful not to duplicate any other hot keys you have defined on this popup menu.

See Also

[Delete a Tool](#)

Delete a Tool from CD Tray's Menu



This dialog is used to delete any of the user-defined tools added to CD Tray's Tools menu. Select the tool from the combo box, and click Ok to confirm.

See Also
[Add a Tool](#)

Selecting this menu item will restart the track currently playing from the beginning.
This item is disabled when CD Tray is stopped.

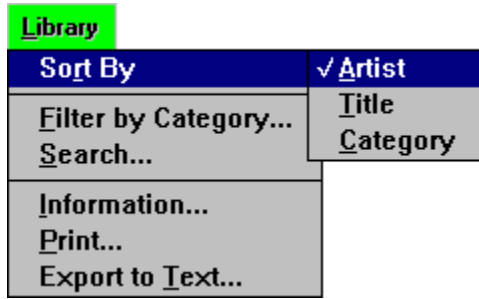
Select this item to make CD Tray play the current track continuously. When this menu item is checked, Track Repeat is enabled.

Select this item to make CD Tray play the current compact disc continuously. When this menu item is checked, Disc Repeat is enabled.

Reveals another popup menu with tools or programs you wish to execute from CD Tray.

An example of a user-defined tool.

Library Menu



Click the menu item for a description of that item.

Shrink Menu



Click the menu item for a description of that item.

Window Menu




Click the menu item for a description of that item.


The current window shown inside CD Tray will be checked.

Invokes the Disc Library Browsing window where you may browse and edit the discs in the Disc Library.

This also enables the Library Menu for access to Disc Library functions

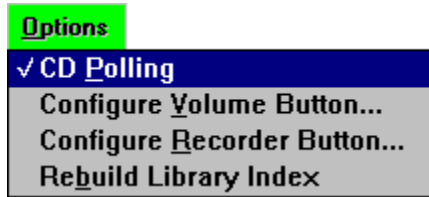
Switching to this window may also be accomplished by clicking  on the SpeedBar.

Invokes the Songs window where you may edit the song titles for the current disc and instantly play tracks on the current disc.

Switching to the Songs window may also be done by clicking  on the SpeedBar.

Invoke an animated graphics window. These windows are for show only and just might make listening to music at your computer a little more relaxing.

Options Menu



Click the menu item for a description of that item.

CD Polling Option

CD Tray uses Windows' timer facilities for all updating of digital readouts, track highlighting and so forth. The CD-ROM drive is polled approximately once every second and returns the disc's playing information such as the disc's position, current track, and so forth. Unchecking the CD Polling menu item in the Options Menu will turn this polling off. Turning polling off can minimize the "stress" on Windows while using other applications and listening to music.

CD Polling is automatically turned off if CD Tray is minimized to an icon on the Windows desktop. Restoring CD Tray from minimization will cause CD Tray to re-update itself accordingly.

In addition, another timer is used if CD Tray is in program mode. However, this timer is not turned off while CD Tray is minimized. This allows program mode operation while CD Tray is minimized. In program mode, other Windows applications that use timers could affect the synchronization of the program mode timer. It is best to not use too many of other Windows applications which use timers while CD Tray is in program mode.

Note: Using a Non-Windows Application in full-screen mode will (depending on the application) disable or make erroneous the track programming for CD Tray. Do not run full screen Non-Windows Applications while using CD Tray in program mode. Instead, run them in a window (386 Enhanced Windows mode only).

Help Menu

From this menu you may invoke the Windows Help System to view CD Tray's help information.

The About window is also executed from this menu. The About window displays CD Tray program information as well as some information about the current state of the Windows operating system.

Track Programming



This dialog is used to program CD Tray. Programming means that individual tracks from the current compact disc can be selected to be played. The tracks can be selected in any order and as many or few as desired. A favorite track program can be saved, if desired. After a track program is created, the Review Program tool will appear listing the program and program time information.



This button on the Speedbar can also be used to execute this tool.

Appearance

When first displayed, all the songs will be listed in the 'Available' list box on the left. These tracks are available for programming. The 'Programmed' list box on the right, lists the tracks that are programmed. It is initially empty.

Above each list box the total time length of all the songs contained in the corresponding list box will be displayed. The programmed length will increase as tracks are programmed while the available length will be decreased by the same amount.

Programming

Programming CD Tray is easy. To select a track, click on the track title and then click the **Select** button. Alternately, you may double click the track title to do the same thing. This will move the track title from the 'Available' list box to the 'Programmed' list box. You also may remove a track from the 'Programmed' list back to the 'Available' list box by selecting the track and clicking the **Reject** button. Again, you may double click the track to accomplish the same thing.

Shuffle Play

If you wish to play the tracks in a random order, click the Shuffle button. This will move all of the tracks from the 'Available' list box to the 'Programmed' list box. You may click the Shuffle button as many times as desired to re-shuffle the tracks into a different order. After shuffling the tracks, tracks from the 'Programmed' list box may be removed as described above.

Starting the Program

After the tracks are programmed that you desire to play, click the **Done** button. This will launch CD Tray into program mode. The Review Program tool will appear listing the track program and the first track programmed will be highlighted in red in the Songs List window.

To start playing the program, start the disc playing as usual by either clicking the Play Control button, pressing Ctrl-P or selecting Play from Main Player's Control Menu. The direct play buttons in the Songs window are disabled while CD Tray is in program mode.

All of CD Tray's play controls can still be used. One difference is skipping to the next and previous tracks using Skip Right and Skip Left controls will cause CD Tray to skip to the next or previous track that is *programmed*. Stopping CD Tray while in program mode, will cancel program mode, and return CD Tray to continuous play mode. Program mode can also be cancelled without stopping play by selecting 'Continuous Play' from the Main Player's Tools Menu. The track program will be cancelled and tracks will be played in order.

Saving a Program

While CD Tray is in program mode, you may save the current program for this disc in the Disc Library. This is done by selecting the Save Program menu item in the Disc Menu. One program may be saved for each disc in the Disc Library. If a saved program already exists, it will be overwritten.

Loading a Saved Program

To load a previously saved track program, select Load Program from the Disc Menu. This selection will load the saved track program and CD Tray will enter program mode. Start the track program playing as described above.

Programming Notes

In program mode, other Windows applications that use timers could affect the synchronization of the program mode timer. It is best to not use too many other Windows applications which use timers while CD Tray is in program mode.

Using a Non-Windows Application (An MS-DOS program) in full-screen mode will (depending on how the program is configured) disable or make erroneous the track programming for CD Tray. Do not run full screen Non-Windows Applications while using CD Tray in program mode. Instead, run them in a window (386 Enhanced Windows mode only).

Review Program Tool



When CD Tray is in program mode, this tool lists the tracks that are currently programmed and displays current playing times for the track program.

The current track that is playing or cued is highlighted. The digital displays are real-time counters of the duration, elapsed and remaining times for the current track program. This is very useful if you make cassette tapes using your computer.

This tool appears automatically after tracks are programmed using the Track Programming tool and is non-interactive.

The dialog can be closed, if desired, by clicking the **Close** button. If it is closed, and CD Tray is still in program mode, it can be recalled by selecting the Review Program menu item in the Tools menu or by pressing the Track Programming button on the Speedbar. The menu item is only available if CD Tray is in program mode.

Saving and Recalling a Track Program

For each disc in the Disc Library, a favorite track program may be saved. This program can then be recalled and played without having to re-program CD Tray.

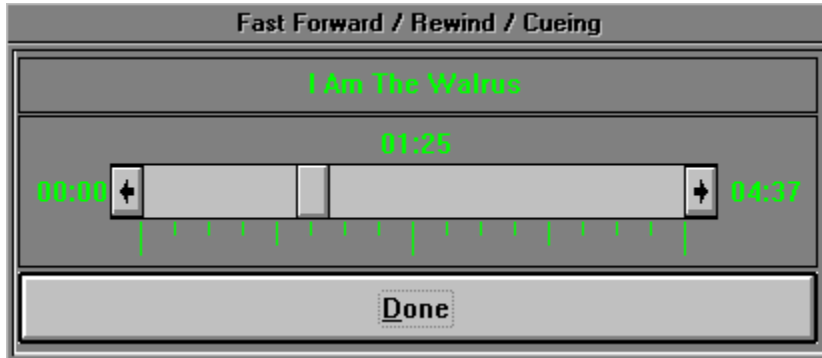
Saving a Program

While CD Tray is in program mode, you may save the current program for this disc in the Disc Library. This is done by selecting the Save Program menu item in the Disc Menu. One program may be saved for each disc in the Disc Library. If a saved program already exists, it will be overwritten.

Loading a Saved Program

To load a previously saved track program, select Load Program from the Disc Menu. This selection will load the saved track program and CD Tray will enter program mode. Start the track program playing as described above.

Fast Forward / Rewind / Cueing Tool



This tool allows full control of Fast Forward, Rewind and Cueing operations for CD Tray. The current track that is playing or cued is the target of its operations. This tool can be executed at any time except when CD Tray is in program mode and may be left on the screen while executing other CD Tray functions.



This button on the Speedbar can also be used to execute this tool.

Appearance

The current song title is displayed at the top of the dialog. This is the song that will be controlled by this tool. If the song changes while this tool is displayed, it will detect the change and update itself accordingly. The current position of the scroll bar's thumb, relative to the length of the current track, is displayed above the scroll bar. The length of the track is displayed to the right of the scroll bar.

Using the Tool

The scroll bar controls the Fast Forward, Rewind and Cueing operations. Clicking on the scroll bar increments the position of the read mechanism of the CD-ROM drive to that position of the current track. The track position indicator gives a readout in minutes and seconds of the relative position of the scroll bar thumb to track time as the scroll bar thumb moves.

Time Increments

Clicking and releasing the left mouse button on the scroll bar will increment / decrement the current playing position by 10 seconds. Clicking the arrows at either end of the scroll bar increments / decrements by 1 second. You may also drag the scroll bar thumb to increment / decrement in larger amounts.

Clicking and holding the mouse button down on the scroll bar will scroll the tool in multiple increments. The track time indicator will also increase / decrease indicating the position the scroll bar's thumb in relation to the track position. After positioning the thumb, release the mouse button and the song will be fast forwarded, rewound or cued to that position.

Operation

When CD Tray is playing, this tool controls Fast Forwarding and Rewinding. CD Tray will skip to the position indicated by the scroll bar's thumb and time counter and continue to play from that position.

If CD Tray is stopped, Cueing is performed. After positioning the scroll bar's thumb to the position desired, clicking the Play Control will start CD Tray playing from the position indicated by the track time indicator.

You may leave this tool in view on the screen and still have access to the controls, menus, etc. of CD Tray. By leaving this tool in view while CD Tray is playing you can watch the thumb move automatically to the relative position of the current track that CD Tray is playing. The track indicators will also change if the track changes while this tool is present.

Keep in mind that this tool works for the current track that is playing or is next to play (cued). You may use CD Tray's Skip Right and Skip Left controls to move to a different track if desired.

Segment Play Tool



This tool allows a small segment of the current track to be selected and played. A selection, in this sense, means selecting a starting position from the current track and then selecting an ending position. CD Tray will play the segment from start to finish and then stop.



This button on the Speedbar can also be used to execute this tool.

This tool can only be selected if CD Tray is stopped and is not in program mode.

Purpose

The primary purpose of this tool is to control play while recording Windows .WAV files, though playing segments of certain tracks can be mildly entertaining.

Track Selection

Select the track you wish to play segments from prior to starting the Segment Play tool using the controls on CD Tray. To play segments from a different track, click the **Done** button and reselect the track using CD Tray's controls. Restart the Segment Play tool again to play segments from that track.

Appearance

The top scroll bar controls the starting position of the segment to be played. The bottom scroll bar controls the ending position of the segment to be played. The relative position of the current track in minutes and seconds is displayed above each scroll bar.

Using the Tool

Using the tool is easy. First choose a segment of the current track to be played. Do this by moving the top scroll bar's thumb to select the segment start position and move the bottom scroll bar's thumb to select the segment ending position.

After selecting the segment to be played, press the **Go** button to begin play. You may press the **Go** button as many times as you wish to play the segment.

While the segment is playing, you may press the **Stop** button to stop playing the track segment.

After pressing the **Go** button, the scroll bar thumb indicating the starting position will move forward and the starting time indicator will increment until the stop position is reached.

When the thumb for the starting position reaches the position of the thumb for the ending position, play will stop and the scroll bar and time indicator for the starting position will return to the position previously selected.

Note: The starting position is inclusive and the ending position is exclusive. This means that when a segment is selected, play will start exactly at the start time and will play up to the stop time position.

Restrictions

Both scroll bars will not allow movement of its thumb into an invalid part of the scroll bar. In other words, moving the scroll bar's thumb that controls the end of the segment to a position that is previous to the beginning of the segment is not allowed and the scroll bar will not allow that movement. In addition, the scroll bars will not respond to mouse clicks while the selected segment is currently playing.

While this dialog is in view on the screen, access to the controls, menus, etc. of CD Tray will not be available. However, you can switch to other applications using the mouse or by pressing the Windows Alt-Tab combination.

Speed Bar

The Speedbar is provided for quick execution for CD Tray functions that are used often. The two shrunk players also have some of these buttons.



Click a button for a description of that button.

Depending on the state of CD Tray, these buttons will sometimes be disabled. When disabled, the buttons are dimmed.

Elapsed Disc Time Graph



This is a bar graph, sometimes called a thermometer, which indicates the percentage of elapsed time (0% to 100%) that has played for the entire compact disc. The graph fills itself with color as the percentage of time played increases. The graph always indicates the percentage, even if CD Tray is stopped, to indicate positioning for cued tracks.

Disc Library Button

This button provides access to the Disc Library. Clicking this button will switch the current window to the Disc Library Browsing window.

This button will be in one of two states:



Disc Library is closed and ready to be opened.



The Disc Library is currently open and the Disc Library Browsing window is the current window. This button is effectively disabled at this point and you may click the Songs Button to return to the Songs window or alternatively return to a graphics window by selecting it from the menu.

Songs Button

This button provides access to the Songs window. Clicking this button will switch the current window to the Songs window.

This button will be in one of three states:



The Songs window is not the current window, but is available because a disc is in the CD-ROM drive.



The Songs window is the current window.



Disabled. The Songs window is not available because there is no disc in the CD-ROM drive..

Track Programming Button



This button executes the Track Programming tool.

Fast Forward / Rewind / Cueing Button



This button executes the Fast Forward / Rewind / Cueing tool.

Segment Play Button



This button executes the Segment Play tool.

Volume Button



This button executes a mixer or volume program normally supplied with computer sound cards. This button must be configured with the name of the program that will be executed when this button is clicked.

Recorder Button



This button executes a sound recorder program used to record Windows .WAV files. One such recorder, supplied with Windows, is the Windows Sound Recorder (SOUNDREC.EXE).

This button must be configured with the name of the program that will be executed when this button is clicked.

Shrink Buttons

These buttons provide a quick means of switching to one of the shrunk players. When clicked, CD Tray will switch from the Main Player to the shrunk player chosen as follows:



Shrink to the Face Plate player



Shrink to the Button Bar player

Power Button



Exit CD Tray. Clicking this button will close CD Tray immediately.

When exiting CD Tray, if a disc is currently playing, you will be prompted whether to continue to play the disc. If CD Tray is in program mode you will be prompted whether to actually exit and discontinue the current track program.

Mixer and Recorder Execution

Most computer systems which have a CD-ROM drive installed, also have a sound board and external speakers. To fully appreciate CD Tray and digital audio, this is a necessity. Most sound boards also provide software programs to control the volume of the sound board's output. These program are commonly called "Mixer" programs since they allow not only control of CD audio but also other analog sound sources. CD Tray permits execution of such programs from CD Tray itself.

CD Tray provides a button on the Speedbar, designated the Volume button from which a mixer program may be executed. Of course, the program could be executed normally, such as through the Windows Program Manager, but having the volume button on the Speedbar is much more convenient.

Also provided on the Speedbar is a button designated the Recorder button. This button works like the Volume button and is reserved for a program which records Windows .WAV audio files. One such program, the Sound Recorder comes with Windows. The Segment Play tool is designed to work along with a recorder by playing disc passages or segments.

The Volume and Recorder buttons on the Speedbar are configured by selecting Configure Volume Button or Configure Recorder Button on the CD Tray Main player's Options menu. This executes a dialog:



Type the full path and program name of the executable program you wish to be executed when the Volume (or Recorder) button is clicked. Alternately, you may click the **Browse** button. This will present a file dialog that can be used to browse through the directories of your hard disk to find the executable (.EXE) file. Browsing for the program is easier than trying to remember the complete path to the program which you might get wrong.

CD Tray can also execute other external programs by adding the programs to CD Tray's Tools menu.

Executing Other Programs From CD Tray

CD Tray provides the convenience of running other external programs from CD Tray without leaving CD Tray. This allows CD Tray to be configured as a host to all of your multimedia programs or any other programs you wish to have handy while using CD Tray.

Two buttons are provided on the Speedbar to execute a Mixer (Volume) program and a Windows .WAV file Recorder program. You also may add and delete programs on CD Tray's Tools menu.

Keyboard Play Control

You may control the playing function of CD Tray using the following hot-keys:

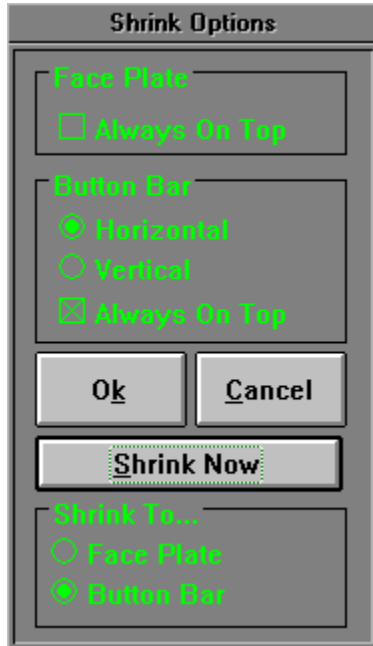
- Ctrl-P --> Play
- Ctrl-S --> Stop
- Ctrl-U --> Pause
- Ctrl-M --> Resume
- Ctrl-X --> Skip to Next Track
- Ctrl-V --> Skip to Previous Track
- Ctrl-J --> Eject disc from the CD-ROM drive

These keys work with all three CD Tray players.

Additionally,

- Ctrl-D --> Save Current Disc Information into [Disc Library](#)

Shrink Options



From this dialog you may set certain options for the two shrunk players, the Face Plate and the Button Bar. You may optionally proceed with switching to one of the players after setting the options.

For the Face Plate player, you may toggle the "Always On Top" status of the player.

For the Button Bar player, you also may toggle "Always On Top". You also may choose between having the Button Bar be displayed vertically or horizontally.

After setting the options, click **OK** to save the settings. Optionally, choose **Shrink Now** to proceed with switching to the shrunk player. The player is chosen by selecting it from the radio controls in the box labeled 'Shrink To...".

The last settings of these options are preserved in CDTRAY.INI so that they are re-set each time CD Tray is executed.

The window coordinates of the shrunk players are saved so that the players show up at the same location on the Windows desktop each time CD Tray is run.

Graphics Windows

These windows are for show only and just might make listening to music at your computer a little more relaxing.

Using The Disc Library

- [The Disc Library Browsing Window](#)
- [Editing Discs](#)
- [Sorting](#)
- [Filtering by Category](#)
- [Searching](#)
- [Disc Library Information](#)
- [Printing](#)
- [Exporting](#)

Disc Library Browsing Window

Disc	Artist	Title
1	Aerosmith	Get Your Wings
2	Alan Parsons Project	Turn of a Friendly Mind
3	Bad Company	Ten From Six
4	Beatles	Abbey Road
5	Buffet, Jimmy	Greatest Hits

In this window, you may browse the compact discs that are in the Disc Library. You may also edit the information contained in each record by double-clicking the disc you wish to edit.

Moving Around

Scroll bars are provided to scroll the window vertically to discs not shown and horizontally to reveal other fields in the compact disc record. You may also use the **Up/Down**, **Right/Left arrows** and **PgUp/PgDown** to scroll this window. Note that pressing the Ctrl key while pressing one of the above keys will scroll the window in larger increments with the exception that **Ctrl-PgUp/Ctrl-PgDown** will move to the first or last record, respectively.

Editing a Disc's Information

Double click with the mouse on a compact disc record entry to enable the Disc Edit dialog for that disc. This dialog allows editing of the information or deletion of individual compact discs.

Performing Database Functions

When this window is active, the Library Menu is enabled permitting access to CD Tray's database functions. To perform database functions such as sorting, searching, filtering etc., choose the function by selecting it from the Library Menu.

Editing Discs in the Disc Library

After a disc is saved to the Disc Library, it may later be recalled and edited. While the disc to be edited is displayed in the Disc Library Browsing window, **double-click** on the disc to execute the Disc Edit dialog.

The screenshot shows the 'Edit Disc Information' dialog box. It contains several input fields and buttons. The 'Artist' field is set to 'Red Hot Chili Peppers', 'Title' to 'Blood Sugar Sex Magik', 'Category' to 'Alternative', 'Purchase Info' to 'CD Mail Order Club', and 'Disc Cost' to '15.99'. Each of these fields has a 'New' button next to it. Below the input fields, it displays 'Total Songs 17' and 'Disc Length 73:49'. At the bottom of the dialog are three buttons: 'Save', 'Cancel', and 'Delete'. On the right side of the dialog is a list box containing a list of song titles with their durations: '04:03-The Power of Eq', '03:36-If You Have to A', '04:55-Breaking the Gir', '05:23-Funky Monks', '03:37-Suck My Kiss', '04:04-I Could Have Lie', '04:00-Mellowship Sun', '04:08-The Righteous &', '04:42-Give It Away', '04:31-Blood Sugar Sex', '04:24-Under the Bridge', '04:25-Naked in the Ra', and '04:42-Apache Rose Pe'.

The Disc Edit dialog provides a means to edit the different fields of a compact disc record in the Disc Library.

Editing Artist and Title

You may edit the Artist and Title information previously entered into the Artist / Title Window.

Editing Informational Fields

The other fields listed are strictly for your information only. You do not have to enter anything into these fields, but doing so will allow categorizing your Compact Disc Library and keeping a running total of the cost of all compact discs in your library. (Note: CD Tray uses the currency symbol listed in the International [Intl] section of WIN.INI. for display of different monetary units.

Instead of edit controls, combo boxes are used to input the informational entries. These combo boxes contain each unique entry for that field in the Disc Library. This allows for easy editing since you will probably use the same entries many times throughout the Disc Library.

If you wish to enter new information, click the **New** button beside that corresponding field. This will present a dialog for entering the new information.

Enter the information and click **Ok** to save. This new information will then be available to enter into other compact disc records without having to re-type the same thing over and over for each disc.

If you make a mistake, click the **New** button again and enter the new information. The old information will still be listed in the combo box but the next time CD Tray is started the old mistakenly entered information will not be listed.

Editing Song Titles

Also, in this dialog is a list box with the song titles for this compact disc. Each song title is preceded with the length of the track. Click on the song title. This will present a dialog to edit the song title. Enter the information and click **Ok** to save.

Saving Information

After editing any of the compact disc record's information, click the **Save** button to save or click **Cancel** to discard the edits.

Note: Pressing **Ctrl-D** here **does not** save the record shown in this dialog. You must click the **Save** button to save this information. **Ctrl-D** only saves the information for the disc currently loaded into the CD-ROM drive.

Deleting a Compact Disc Record

If you wish to delete this compact disc from the Disc Library, click the **Delete** button. After confirmation, the disc will be deleted.

Notes

This dialog may also be executed from the Disc Library Search dialog by selecting the disc after a search has been completed.

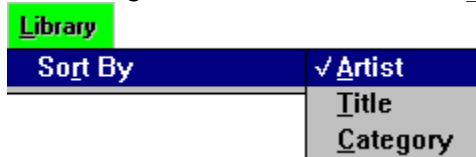
Only the Artist name is required to save a disc. If you are in a hurry, just enter the Artist name in the Artist / Title window, save the disc, and later recall and edit the disc's information as described above.

This program cannot save discs into the Disc Library without first inserting the disc into the CD-ROM drive. Information vital to the operation of CD Tray must be read from the compact disc and cannot be entered manually.

Non-audio CD-ROM compact discs may not be saved by CD Tray.

Sorting the Disc Library

You may alternate the order in which the discs are displayed in the Browsing window by selecting the sort order from the Library Menu.



The order specifies the field that controls the alphabetic order that compact disc records will be listed in. For example, sorting by Artist might make Alan Parsons Project the first record and ZZ Top the last.

More importantly, after assigning categories to the discs in the Disc Library, sorting by Category will list the disc records in the order such that all discs within the same category will be shown listed together. For example, all discs in the category 'Alternative' would be listed first. Note that CD Tray automatically employs secondary keys so that within a sorted category, the discs are secondarily sorted by Artist, then Title.

The Browsing window may also be Filtered while sorting.

Filter the Disc Library by Category



In this dialog you are presented a combo box from which you may choose a category to filter the Disc Library. The combo box will contain every unique music category you have entered for discs in the Disc Library. Choose one of these categories and only those records whose music category field matches the filter you selected will be listed in the Disc Library Browsing window.

At least one record will be shown. Select **<All Categories>** to display all records. Select **<No Category>** to display records whose category is blank.

The Browsing window may also be Sorted while filtering.

Searching the Disc Library



The Disc Library Search dialog provides a convenient means of searching for text within the records of the Disc Library. It also provides an alternate means to edit discs in the library.

Entering Search Criteria

The text to search for can be in any of three fields: The Artist, Title and Song. Searching for text in the Song field, of course, searches all songs on each disc. You can enter as much or as little text as you desire to search for. The more text that is entered to search for, the more narrow the search criteria. This results in fewer found discs.

Search Examples

Entering 'zep' in the Artist field will find all Led Zeppelin discs.

Entering 'zep' in the Artist field *and* 'holy' in the Title Field will find only Led Zeppelin, Houses of the Holy.

Now, also adding 'ocean' to the Song field will find Led Zeppelin, Houses of the Holy, 08 - The Ocean.

In the graphic example shown above, 'bea' is entered for the Artist field and 'love' is entered for the Song field. This search found all Beatles discs with 'love' in the song title. Of course, if the Beach Boys were in the Disc Library they also would be listed, provided they have a song with the text 'love' in the title.

Wildcard Searches

You may also use the wild card character, '*' (asterisk), to indicate that anything matches this field. An example would be to put a '*' in the Artist field. Searching would list all the discs in the Disc Library since any Artist's name matches the wild card character. The wild card character must be used alone and cannot be imbedded in text unless you are actually searching for the * symbol. You may use the wildcard character in any of the three searchable fields.

When entering search criteria, remember that the text being searched for will match that same text *anywhere* within the corresponding field of the disc record being searched.

Starting the Search

After entering the Search Criteria as explained above, click the **Search** button or press **Return** to start the search.

Search Results

After a search is performed, the large output box will display the discs found matching the criteria (if any were found at all) and the Search Results messages will display the number of discs and/or songs that were found matching the given search criteria.

Searching Again

To perform another search, click the **Clear** button. This clears all Search Criteria input fields as well as the Search Result output list box. Alternately, clearing all the input fields by deleting or backspacing over the characters will also clear the dialog for the next search.

Editing Discs Found in the Search

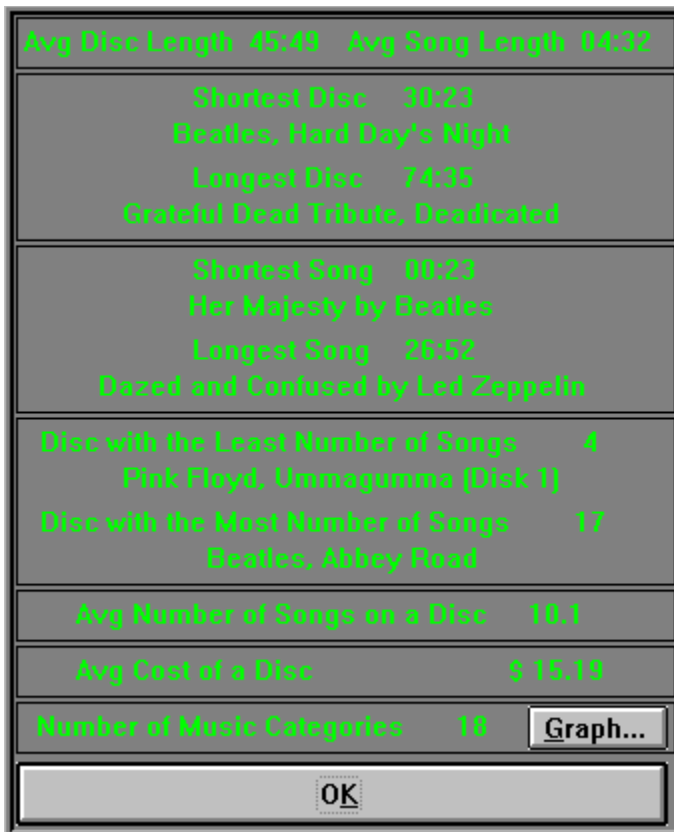
As an alternate means of editing discs in the Disc Library, the Disc Edit dialog may be invoked from this dialog. After a search is performed, clicking on the Artist / Title line in the output box will execute the Disc Edit dialog so that the disc may be edited. Clicking song titles has no effect since they are edited via the Disc Edit dialog.

Disc Library Information



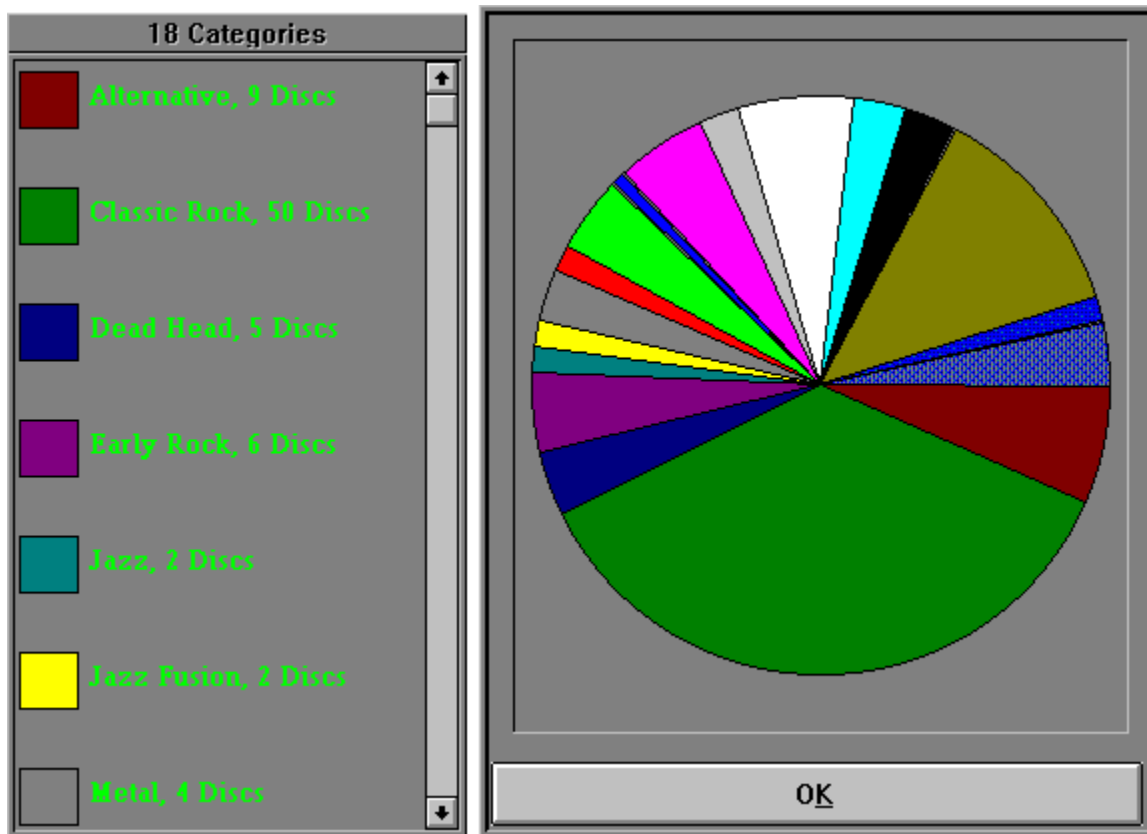
This dialog presents a summary of various information about the Disc Library similar to the one shown above.

For more information about your Disc Library, click the **More Information...** button to display a dialog such as this.

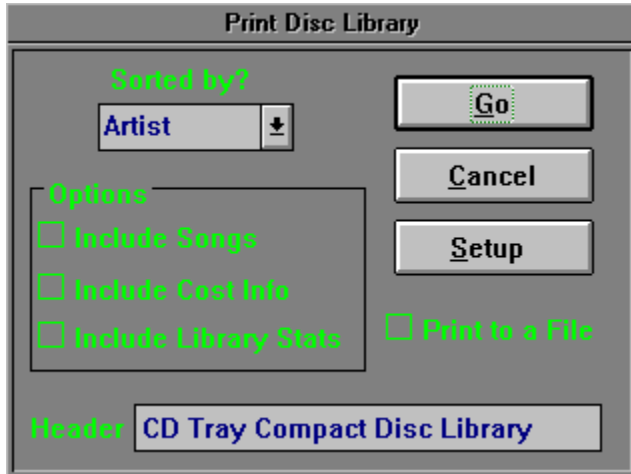


For a summary of the music categories that have been defined for the discs in the Disc

Library, click the **Graph...** button. This will display a pie graph of the different categories as well as listing how many discs are assigned to each category. The graph is limited to 64 categories. As an example:



Printing the Disc Library



This dialog is used to control printing compact disc records from the Compact Disc Library.

Choosing Options

Various options are allowed when printing.

You may choose the sorted order for the discs as they are printed. The default is sorted by Artist.

Use the check boxes to control the printing of certain information. When checked, the information will print. When not checked, that information will not be printed.

Header Text

Also, optionally, you may enter a Header into the Header edit control. This text will be printed at the top of each page of output.

Print to a File

You may print to a file instead of the printer by checking the Print to a File check box. All printer control codes will be imbedded in the printed file.

Printer Setup

To set options specific to your printer, click the **Setup** button.

Starting the Printout

After setting any of these options, click the **Go** button to start printing. After printing starts, an abort print dialog will appear that allows cancelling the printout.

Exporting the Disc Library

This Export To Text menu selection on the Library Menu will dump all records in the Disc Library to an ASCII text file. This file can be used in any number of ways if desired.

Exporting

A Save File As... dialog will be displayed. Enter the filename for the exported file, click **Ok** and the Disc Library records will be listed to the text file.

Why Export?

The exported file can be reformatted, if necessary, and read into other applications. Alternately, bring the file into NotePad or a similiar word processing program and cut and paste into other applications. The file is structured in such a way as to make parsing the data with an input program easier.

Here is an example for one disc's record. Times are in mm:ss:ff format.

2-1006002463		(Primary Key)
Classic Rock		(Music Category)
Pink Floyd,Meddle		(Artist, Title)
CD Mail Order,14.00		(Purchase Info, Cost)
6		(Number of
Songs)		
One of These Days	,00:02:00,05:57:52	(Song Title, Start Point, Duration)
A Pillow of Winds	,05:59:52,05:10:70	
Fearless	,11:10:47,06:08:18	
San Tropez	,17:18:65,03:43:07	
Seamus	,21:01:72,02:15:55	
Echoes	,23:17:52,23:29:23	

Records are seperated by one blank line.

CD-ROM Setup for CD Audio in Windows

Before CD Tray will play audio compact discs you must install and setup your computer system and configure Windows for multimedia. You should install your CD-ROM drive according to the manufacturer's instructions. Other software drivers are also necessary to be installed for CD Audio support in Windows as discussed below.

Why the need for software drivers?

Drivers make device independence possible for Windows applications, providing the hardware-specific interface between the physical devices and the Windows operating system. Sometimes software drivers are known as device drivers for this reason..

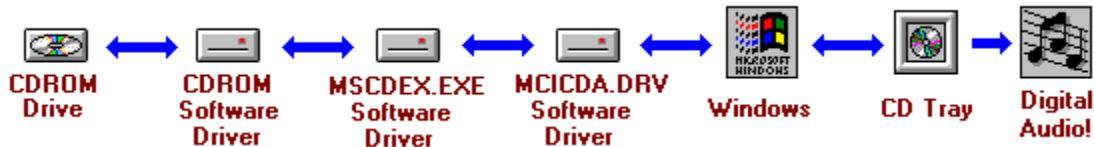
Installing CD Audio drivers

CD Audio is accomplished in Windows through the interaction of three software drivers:

- The CD-ROM device driver from the CD-ROM drive manufacturer.
- MSCDEX.EXE device driver from the CD-ROM drive manufacturer or Microsoft Corporation. Note: MSCDEX.EXE, version 2.2 is now provided with MS-DOS version 6.0.



MCICDA.DRV driver which comes with Windows 3.1.



You should always try to ensure that you have the latest version of the above drivers by contacting the manufacturer of your CD-ROM drive or Microsoft Corporation.

All three drivers must be installed and configured correctly for CD Audio support. When Windows Setup is run, it checks for the presence of MSCDEX.EXE in memory. If it is found, it creates an entry for MCICDA.DRV in your SYSTEM INI file. **However, it DOES NOT install the driver!** This must be done after the installation is completed through the Windows Control Panel. Here are the steps to add the drivers to your system:

1. Add the CD-ROM device driver entry (which came with your CD-ROM drive) into the CONFIG.SYS startup file. Consult your CD-ROM drive's documentation for this.
2. Add MSCDEX.EXE (Microsoft CD-ROM Extensions) into the AUTOEXEC.BAT startup file.
3. Ensure the above drivers are configured properly according to the supplied documentation for each driver.
4. Start the Windows Control Panel and choose the Drivers Icon. (Show Me...)
5. Press the ADD button in the Drivers section of the Control Panel.
6. Select the "[MCI] CD Audio" entry and press the OK button. If prompted, insert the appropriate Windows distribution disc requested and follow the instructions.
7. Restart windows. You should now be able to run CD Tray to play audio compact discs.

Troubleshooting

If you experience trouble playing audio try these steps:

- Check for the presence of the CDAudio entry in SYSTEM.INI by:
 1. Using the Windows' Notepad application, load the SYSTEM.INI file.
 2. Locate the [MCI] section.
 3. There should be an entry: "CDAudio=mcicda.driv". If there is not, add it.
 4. Save the SYSTEM.INI file and exit Notepad.
 5. Restart Windows.
- Ensure that the file MCICDA.DRV is in your WINDOWS\SYSTEM directory.
- Ensure that the file MMSYSTEM.DLL is in your WINDOWS\SYSTEM directory.
- Ensure no other programs are using the CD Audio device driver at the same time. CD Tray cannot open the device while it is being used by another program.
- Insert an audio compact disc into the CD-ROM drive BEFORE starting CD Tray
- Clean the compact discs being played and clean the lens pickup system on the CD-ROM drive. Dirty discs and a dirty lens can cause a compact disc to skip while playing songs, reset the drive, or not play a disc at all. In order to clean a CD-ROM drive, a CD cleaning disc should be purchased and used regularly.
- If using a sound card in your system, make sure that the CD Audio output volume is NOT in Record mode and is turned up sufficiently to hear audio through the speakers.

If you also experience problems with other programs which use the CD-ROM drive try these steps:

- Consult the documentation for MSCDEX.EXE and the CD-ROM device driver for proper installation.
- Strip CONFIG.SYS and AUTOEXEC.BAT of all but the necessary drivers and restart your computer. Also, if loading these drivers into the high memory area, try loading them normally into the first 640K of RAM.
- Consult with your CD-ROM drive manufacturer to obtain the most recent versions of the software drivers.

Miscellaneous Information

- [Back Up Your Compact Disc Library!](#)
- [Rebuilding the Disc Library Index](#)
- [Technical Support](#)

Back Up Your CD Library!

It is a good idea to make frequent backups of your Compact Disc Library. The database is kept in two files, CDTRAY.DAT and CDTRAY.IXC.

You should back up the database to a floppy disc or other medium. At the very least, keep a duplicate copy of your database somewhere on your hard disc. Also keeping an up to date exported text file of your database is a good idea.

Since the CD Tray Disc Library must be built by inserting each compact disc into the CD-ROM drive, re-creating a lost database could take quite a while to accomplish. **Backups are important!**

See Also

[Rebuilding the Disc Library Index](#)

Rebuilding the Disc Library Index

CD Tray uses an ISAM (Indexed Sequential Access Method) file system to store discs in the Disc Library. This means that for each record in the database, one or more index keys can be stored in an ISAM index file. These indexes facilitate very fast location of a particular record in the data file. The structure holding all of the indexes can, with use, become corrupted. This is the time to rebuild the index using each record in the data file. An index can be completely rebuilt from the data records since the indexes are built using the fields in the record.

The Disc Library index can also become corrupted if you turn off or reboot your computer system while the Disc Library database files are open. (The database files are open only when CD Tray first scans a disc and when the Disc Library Browsing window is the current window.) Parts of the database files reside in computer memory while the files are open and pulling the plug can lose information or make it unusable. Database file problems for ISAM files usually can be corrected by rebuilding the index file. However, the best defense against lost data is to make frequent backups.

Rebuild the Disc Library index by choosing the Rebuild Library Index menu item on the Options menu.

You may never have rebuild the Disc Library index file. This feature is for problem solving only - use only if CD Tray has trouble accessing the Disc Library. CD Tray will automatically rebuild the index at program start if it detects a problem.

Note: Before rebuilding the index, CD Tray makes backup copies of the Disc Library files to the filenames: _CDTRAY.DAT and _CDTRAY.IXC. Make sure you have enough hard disc space before to accommodate the files before rebuilding the index file.

Technical Support

Technical Support and problem reporting for CD Tray is provided through two means:

- By mail to JenJen Software.
- Electronically through CompuServe. (Compuserve ID# 73700,3137)

Note: Please include your phone number in case a phone call is required.

Technical Support is unlimited to licensed users of CD Tray.

Technical Support is supplied to unregistered users only if the problem affects the ability to reasonably evaluate the software.



JenJen Software
P.O. Box 1834
Chesterfield, VA 23832

Compuserve ID# 73700,3137

Shrink CD Tray's Main player to the Face Plate player.

Shrink CD Tray's Main player to the Button Bar player.

Registration Information

Thank you for evaluating CD Tray, version 2.0.

CD Tray is a Shareware product. Shareware is a computer program distribution/marketing method that permits potential buyers to try the program prior to purchase. It is NOT free and it is NOT in the Public Domain. You are given the right to use this program for a period of not more than 2 weeks. If, after evaluating the program, you find it to be useful enough to use it on a regular basis, you are expected to pay for it by registering with JenJen Software.

CD Tray is the sole property of JenJen Software. This shareware version may be freely copied and transferred to individual parties for evaluation purposes. It may be posted on public Bulletin Board systems (BBS) for electronic access as long as NO FEE is charged for its distribution except for private BBS operations that charge a regular user subscription fee.

This Shareware version of CD Tray may be distributed on diskette or other media by Shareware disk distributors/vendors as long as all attendant files are included. Vendors should stress the Shareware concept of payment for the program to its author after the program evaluation period.

This copy of CD Tray is fully functional except for the following:

- * The Compact Disc Library is limited to 25 compact discs.
- * Compact Disc playing is periodically stopped with a registration reminder.
- * CD Tray will automatically stop play when closed.

Registration (payment) is required for the fully functional version of the program.

Registration

The registration fee for CD Tray 2.0 is **\$35.00 (US Currency)**, PLUS shipping and handling.

With registration you will receive:

- The fully functional version of the CD Tray program and help files on your choice of disk format (5.25 or 3.5 disks).

CD Tray is currently packaged inside a CD Jewel Case (3.5 only) so that it can be included with your CD-ROM disc collection.
(Subject to availability)

- Unlimited Technical Support.

Payment Instructions

United States Customers

Order CD Tray directly from JenJen Software by using Personal Check, Money Order or Cash. Shipping and Handling is \$3.00. Virginia Residents - add 4.5% sales tax (\$1.58 per copy).

International Customers

Order CD Tray by using International Money Order (marked and converted to US Dollars \$) or by sending Cash in US Dollars only. Shipping and Handling is \$5.00. Foreign bank checks cannot be accepted. Please use Air Mail to ensure prompt order fulfillment.

German Customers

Order CD Tray directly from JenJen Software using the payment methods described above

for International Customers OR you may also order directly from the German distributor, CDV Software using Personal Check, Money Order, Credit Card or Deutsche Mark. If ordering from CDV Software, the registration fee is DM 65.00 plus DM 10.00 for Shipping & Handling.

Please allow 5-8 working days from date of receipt for delivery of your copy of CD Tray.

Sorry, credit cards cannot be accepted by JenJen Software.

Please select the proper CD Tray Order Form for your locale. You may print an order form by selecting the CD Tray Help menu item "Print Order Form". This will bring up a help screen from which you may choose the proper order form for your locale. After selecting the proper order form, from the Windows' help menu, choose File; Print Topic to print the order form.

[Print an order form now!](#)

Upgrading from a previous version of CD Tray

Current registered users of a earlier release of CD Tray may upgrade to version 2.0 of the program by sending JenJen Software \$5.00 (US Currency). Please follow the above guidelines for Payment Methods.

Technical Support

After receipt of registration payment, Technical Support will be provided through two means:

- 1) By mail at the address below, or
- 2) Electronically through CompuServe: ID# 73700,3137

Note: Please include your phone number in case a phone call is required.

Technical Support is unlimited to registered users. Technical Support is supplied to unregistered users only if the problem affects the ability to reasonably evaluate the software.

All comments about this program are appreciated.

One of the great strengths of the Shareware concept is the interaction between the program author and the users. If you have a problem, questions or any suggestions for improvement, please contact JenJen Software.

Please support Shareware authors. Register your Shareware programs!

Contact JenJen Software with your comments at:

JenJen Software
P.O. Box 1834
Chesterfield, VA 23832

or leave E-Mail on Compuserve to
Compuserve ID# 73700,3137

CD Tray Shareware LICENSE

CD Tray is a Shareware product. As such, it is made available to the general computing public for evaluation. Users are licensed to operate CD Tray on their personal computers for the purpose of test and evaluation on a trial basis for a period of no more than two weeks. If the user decides the program is not of sufficient merit to warrant purchase through registration with JenJen Software, program use should cease and the program files should be deleted from the computer it is installed upon. Otherwise, if the program is deemed useful and is in regular use, registration with JenJen Software is required. See the file, REGISTER.TXT for instructions on registering CD Tray.

Registered users are those users that elect to pay for CD Tray and register that payment with JenJen Software. By virtue of registration and payment for the program, registered users are granted a license to continue to utilize the program for as long as they choose.

DISCLAIMER

JenJen Software hereby disclaims all warranties relating to CD Tray, whether it is expressed or implied, including and without limitation to any implied warranties of merchantability or fitness for a particular purpose. JenJen Software cannot and will not be liable for any special, incidental, consequential, indirect or similar damages due to the loss of data or any other reason through the use of CD Tray, even if JenJen Software or an authorized agent has been advised of the possibility of such damages. Further, in no event shall the liability for any damages ever exceed the price paid for the license to use CD Tray, regardless of the form and/or extent of the claim. The user of CD Tray bears all risk as to the quality and performance of the software.

**Copyright 1993 JenJen Software, All Rights Reserved.
Portions Copyright Blaise Computing Inc., All Rights Reserved**

Print an Order Form for CD Tray

Thank you for ordering CD Tray. Please select from the list below for the proper CD Tray Order Form. After selecting the form, you may print it by selecting File; Print Topic from the help menu.

Print a CD Tray Order Form for...

[United States Customers](#)

[International Customers](#)

[German Customers](#)

[Registration Information](#)

CD Tray Order Form
United States Customers

Name..... _____ Date_____

Address..... _____

Phone..... _____ CompuServe ID# _____

Disk 5.25 [] Payment Cash
[]
Format 3.5 [] Method... Check (US Banks only) []
] Money Order (US Dollars
only) []

CD Tray for Windows, Version 2.0 ..(upgrade is \$5.00).\$ [35.00]
Number of copies.....X []
]

Subtotal.....\$ []
] plus Shipping & Handling (upgrade - no charge).....\$ [3.00]
Virginia residents 4.5% sales tax (\$1.58 per copy).....\$ []
Total Amount.....\$ []
]

----- Mail To : JenJen Software
----- P.O. Box 1834
----- Chesterfield, VA 23832

Where did you receive CD Tray? _____

Approximately, how many audio compact discs do you own? _____ Favorite Music? _____

Any Comments? _____

CD Tray Order Form
International Customers

Name..... _____ Date _____

Address..... _____

Phone..... _____ Compuserve ID# _____

Disk 5.25 [] Payment Cash
[]
Format 3.5 [] Method... Check (US Banks only) []
] Money Order (US Dollars
only) []

FOREIGN BANK CHECKS CANNOT BE ACCEPTED!

CD Tray for Windows, Version 2.0 ..(upgrade is \$5.00).\$ [35.00]
Number of copies.....X []
]

Subtotal.....\$ []
] plus Shipping & Handling (upgrade - no charge).....\$ [5.00]
Total Amount.....\$ []
]

----- Mail To : JenJen Software
----- P.O. Box 1834
----- Chesterfield, VA 23832

Where did you receive CD Tray? _____

Approximately, how many audio compact discs do you own? _____ Favorite Music? _____

Any Comments? _____



[Click here to print an order form.](#)

This disc cannot be saved. The Shareware version of CD Tray limited to saving 25 compact discs.



[Click here to print an order form.](#)

The Shareware version of CD Tray interrupts play periodically as reminder to register.

